

## Axial fan with integrated diffuser.

Energy-efficient, powerful and quiet-running.

**ebmpapst**

The engineer's choice



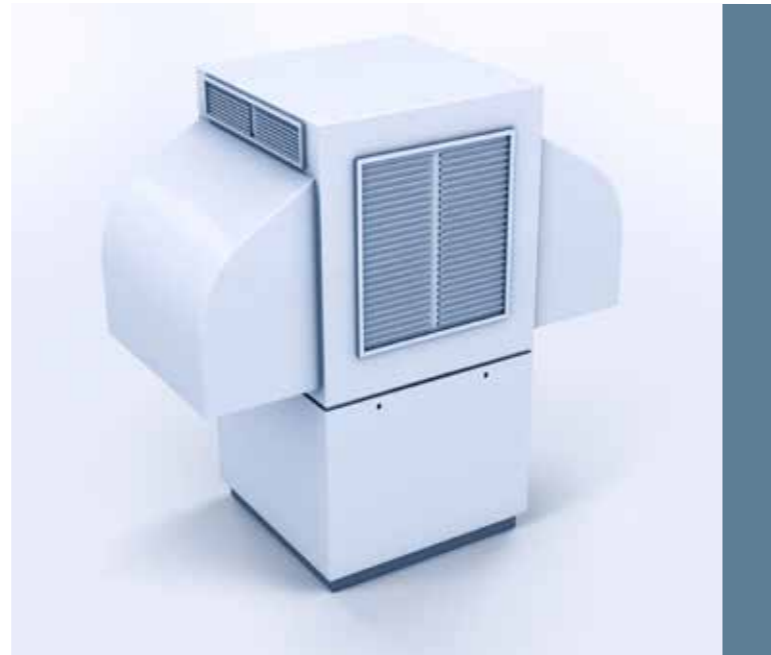
The best possible basis for your application.

Strong performance – proven.

**ebm-papst sets new standards in ventilation and air conditioning:**

Today's heating systems call for new concepts based on renewable energy instead of fossil fuel. Which is why heat pumps are becoming ever more popular. Modern EC fans play an important role in ensuring that these run efficiently, economically and extremely quietly. The size 500 axial fans specially designed for use in outdoor heat pumps have been further optimized with regard to efficiency and noise level.

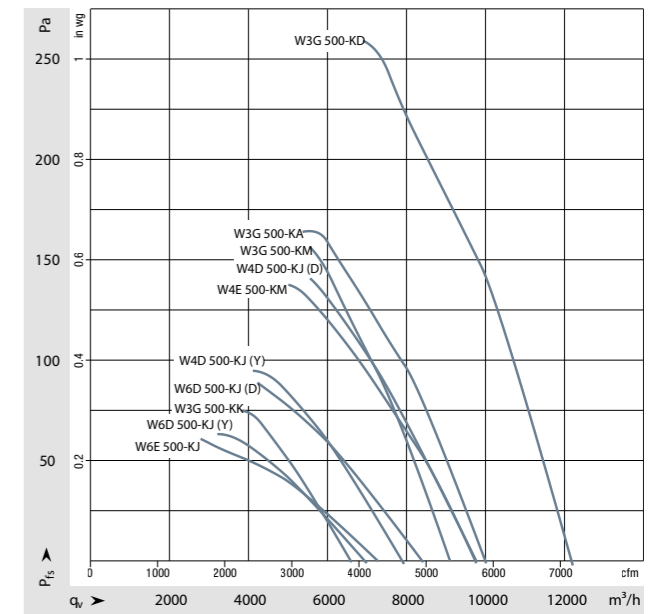
Speed adjustment provides great flexibility, so your heat pump can operate efficiently without disturbing anyone in the vicinity. The axial fan with integrated diffuser thus creates ideal conditions **for the heat pump as a whole** to achieve a high coefficient of performance.



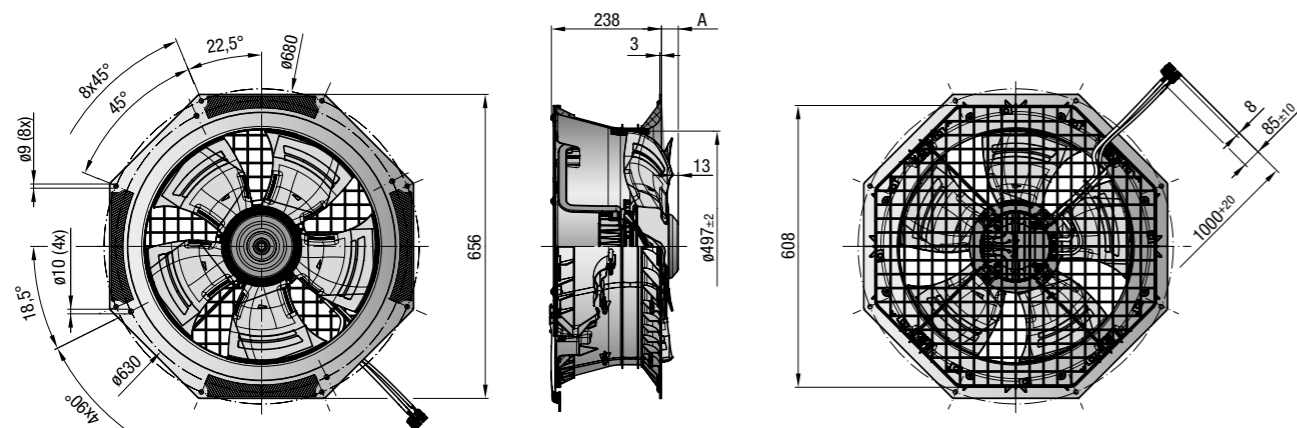
All the advantages at a glance:

- + Advanced system concept**  
Perfectly matched components. Ready-to-connect Plug & Play unit.
- + Top performance**  
Up to 10 % increase in air performance, coupled with 3 dB(A) noise reduction.
- + Innovative EC technology**  
Enables the entire fan system to achieve 23 % higher efficiency than conventional solutions.

**Ideal conditions for the heat pump as a whole to achieve a high coefficient of performance.**



Values measured with guard grill.



Nominal data			Nominal voltage range	Frequency	Speed	Max. power consumption	Max. input current	Perm. ambient temperature	Weight	Dimension A
Item number	Motor	VAC	Hz	rpm	W	A	°C	kg	mm	
W3G 500-KK07-G3	EC	M3G084-DF	1~200-277 V	50/60	970	250	1.1	-25...+60	9.4	25
W3G 500-KA74-25	EC	M3G112-EA	1~200-277 V	50/60	1,440	740	3.2	-25...+60	11.1	23
W3G 500-KD59-05	EC	M3G112-GA	3~380-480 V	50/60	1,770	1,350	2.1	-25...+60	12.6	36
W3G 500-KM03-M3	EC	M3G084-GF	3~400 V	50/60	1,370	650	1.0	-25...+60	10.3	31
W6E 500-KJ05-21	AC	M6E110-EF	1~230 V	50/60	860/830	215/290	1.7/1.51	-25...+60	12.0	42
W4E 500-KM03-21	AC	M4E110-GF	1~230 V	50	1,300/1,370	680/900	3.0/4.0	-25...+60	14.1	62
W6D 500-KJ05-21	AC	M6D110-EF	3~400 V (Δ/Y)	50/60	920/780/1,090/880	260/180/410/290	0.63/0.32/0.72/0.41	-25...+60	11.9	42
W4D 500-KJ03-21	AC	M4D110-EF	3~400 V (Δ/Y)	50	1,340/1,060	710/480	1.4/0.8	-25...+60	11.5	42

Subject to change. Data sheets available on request. The product descriptions contained in this catalog do not constitute assured properties.

**ebm-papst**  
**Mulfingen GmbH & Co. KG**

Bachmühle 2  
74673 Mulfingen  
Germany  
Phone +49 7938 81-0  
Fax +49 7938 81-110  
[info1@de.ebmpapst.com](mailto:info1@de.ebmpapst.com)

**ebmpapst**

The engineer's choice