

Tender specification for EC centrifugal fan modules – RadiPac Airfoil

EC centrifugal fan modules – RadiPac Airfoil

Fan sizes 250 to 1000

Direct-drive single inlet centrifugal fans with backwards-curved high-performance centrifugal impellers with radial diffusers, mounted on a GreenTech EC external rotor motor with integrated control electronics.

Impeller made of aluminum, with 5 backwards-curved, continuously welded, hollow-profile blades; impeller sizes 250 and 280 made of plastic; flow-optimized inlet ring made of galvanized sheet steel with pressure tap.

Motorized impeller statically and dynamically balanced on two planes to balancing grade G 6.3 (motor size 200 to balancing grade G 4.0) in accordance with DIN ISO 21940.

GreenTech EC external rotor motors achieve or exceed the efficiency specifications in accordance with efficiency class IE5 (IEC TS 60034-30-2:2016), magnets with no rare earth elements, maintenance-free ball bearings with long-term lubrication, theoretical nominal service life of at least 40.000 hours of operation.

Efficiency level of integrated EC motor equivalent to IE5 according to IEC/TS 60034-30-2 (Rotating electrical machines – Part 30-2: Efficiency classes of variable speed AC motors (IE-Code) (IEC/TS 60034-30-2:2016).

Soft start, integrated current limitation, extended voltage input 1~200-277 V, 50/60 Hz respectively 3~380-480 V, 50/60 Hz. Fan can be used with all standard power supply networks with unaltered air performance. Integrated electronics, low-noise commutation logic; 100 % open-loop speed control; all fans have an RS485/MODBUS RTU interface, and do not need to be installed with shielded cables. All 1~ types have an integrated active PFC (Power Factor Correction) to reduce disturbing harmonic content. Terminal box made of aluminum/plastic with easily accessible connection area with spring-loaded terminals, environment-resistant cable glands, or with external cable (sizes 250 to 280).

Version for wall mounting:

Support bracket, sizes 250 to 560 and 630 to 800 with size 150 motor as ready-to-install support bracket intended for wall mounting. Support bracket made of bent round bar steel or round tube, welded and coated in black. Mounting plate and inlet ring made of sendzimir galvanized sheet steel.

Version for floor mounting:

Cube design, sizes 630 to 1000 with size 200 motor as ready-toinstall cube design intended exclusively for floor mounting. Struts made of extruded aluminum sections connected to die-cast corner plates, nozzle plate and inlet ring made of sendzimir galvanized sheet steel, motor mounting plate made of coated sheet steel. This version is not suitable for wall mounting.

Any work required for isolation from structure-borne noise to be performed by the customer. Fan satisfies the applicable EMC guidelines and requirements with regard to circuit feedback (for specific information, see the respective data sheet). Documentation and marking conform to the applicable EU Directives.

Reliable performance data, air performance measurements on intake-side chamber test rig according to ISO 5801 and DIN 24163, noise measurements in anechoic rooms according to DIN EN ISO 3745.

Integrated protective devices:

- Alarm relay with zero-potential change-over contacts (250 V AC, 2 A, $\cos \varphi = 1$)
- Locked-rotor protection
- Phase failure detection
- Soft start of motors
- Mains under-voltage detection
- Thermal overload protection for electronics and motor
- Short circuit protection

Tender specification for EC centrifugal fan modules – RadiPac Airfoil

Optional:

- **Other and specific requirements on request**
- **FlowGrid air inlet grill:**
FlowGrid air inlet grill tailor-made for the fan, to reduce assembly and system-related noise. Grill made of high-grade composite material in one piece, available ready for installation and also suitable for retrofitting. Ideal solution for confined intake conditions at the fan and/or if upstream turbulence-inducing fittings are unavoidable. The FlowGrid breaks up the turbulence fields and straightens the flow, resulting in distinct noise reduction.

Technical data:

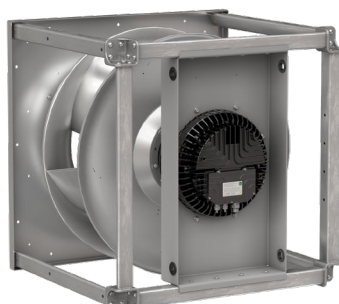
Fan types

Air flow	q_v	= _____	m ³ /h, cfm
Fan static pressure	p_{fs}	= _____	Pa, in wg
Stat. overall efficiency	η_{es}	= _____	%
Operating speed	n	= _____	rpm
Motor type		= EC motor	
Type of control		= 0-100% speed control	
Motor efficiency class		= IE5	
Electrical power consumption	P_{ed}	= _____	kW
Specific fan power	SFP	= _____	kW/(m ³ /s)
Nominal voltage	U_N	= _____	V
Mains frequency	f	= 50 / 60	Hz
Nominal current	I_N	= _____	A
Ingress protection		= IP54	
Sound power level	$L_W A(A, in)$	= _____ / $L_W A(A, out)$ = _____	dB(A)
Sound pressure level (at 1 m)	$L_p A(A, in)$	= _____ / $L_p A(A, out)$ = _____	dB(A)
Ambient temperature range	T	= _____ to _____	°C
Fan mass	m	= _____	kg

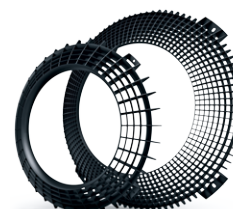
Product photo:



EC centrifugal fans – RadiPac
support bracket
Sizes 250 – 800



EC centrifugal fans – RadiPac
cube design
Sizes 630 - 1000



air inlet grill – FlowGrid
optional

Refer to data sheet for dimensions and wiring